

# Analysis of Time Series

## Chapter 8: Smoothing in the time and frequency domains

Edward L. Ionides

# Outline

- 1 Smoothing a time series
- 2 Seasonal adjustment in the frequency domain
  - The frequency response function of a smoother
- 3 Loess smoothing
  - Business cycles in detrended economic data

# Introduction to smoothing in time series analysis

- Estimating a nonparametric trend from a time series is known as smoothing. We will review some standard smoothing methods.
- We also smooth the periodogram to estimate a spectral density.
- Smoothers have convenient interpretation in the frequency domain. A smoother typically shrinks high frequency components and preserves low frequency components.

## A motivating example

- The economy fluctuates between periods of rapid expansion and periods of slower growth or contraction.
- High unemployment is one of the most visible signs of a dysfunctional economy, in which labor is under-utilized, leading to hardships for many individuals and communities.
- Economists, politicians, businesspeople and the general public therefore have an interest in understanding fluctuations in unemployment.
- Economists try to distinguish between fundamental structural changes in the economy and the shorter-term cyclical booms and busts that appear to be a natural part of capitalist business activity.
- Monthly US unemployment figures are published by the [Bureau of Labor Statistics \(BLS\)](#).
- Measuring unemployment has subtleties, but these are not our immediate focus.

```
system("head unadjusted_unemployment.csv", intern=TRUE)
```

```
[1] "# Data extracted on: February 4, 2016 (10:06:56 AM)"
[2] "# from http://data.bls.gov/timeseries/LNU04000000"
[3] "# Labor Force Statistics from the Current Population Survey"
[4] "# Not Seasonally Adjusted"
[5] "# Series title:      (Unadj) Unemployment Rate"
[6] "# Labor force status: Unemployment rate"
[7] "# Type of data:      Percent or rate"
[8] "# Age:                16 years and over"
[9] "Year,Jan,Feb,Mar,Apr,May,Jun,Jul,Aug,Sep,Oct,Nov,Dec"
[10] "1948,4.0,4.7,4.5,4.0,3.4,3.9,3.9,3.6,3.4,2.9,3.3,3.6"
```

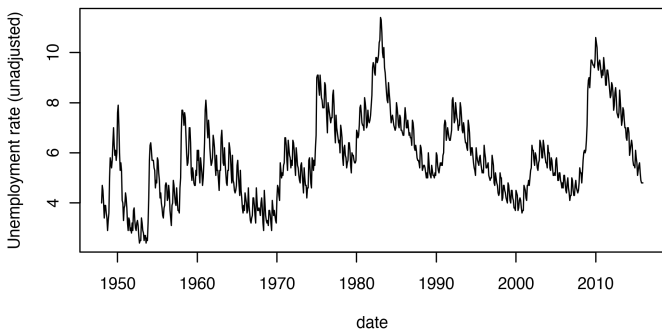
```
U1 <- read.table(file="unadjusted_unemployment.csv",
  sep=",", header=TRUE)
head(U1, 3)
```

Year	Jan	Feb	Mar	Apr	May	Jun	Jul	Aug	Sep	Oct	Nov	Dec
1948	4.0	4.7	4.5	4.0	3.4	3.9	3.9	3.6	3.4	2.9	3.3	3.6
1949	5.0	5.8	5.6	5.4	5.7	6.4	7.0	6.3	5.9	6.1	5.7	6.0
1950	7.6	7.9	7.1	6.0	5.3	5.6	5.3	4.1	4.0	3.3	3.8	3.9

**Question 8.1.** A coding exercise: Explain how the tabulated data in U1 are converted to a time series, below.

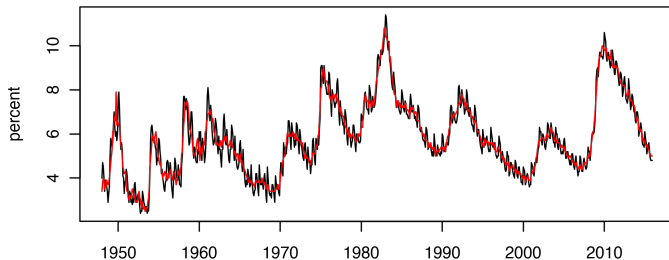
*A matrix in R is a vector containing concatenated columns, plus a dim attribute. Set dim to NULL, and you convert the matrix into this vector.*

```
u1 <- t(as.matrix(U1[2:13]))
dim(u1) <- NULL
date <- seq(from=1948,length=length(u1),by=1/12)
plot(date,u1,type="l",ylab="Unemployment rate (unadjusted)")
```



- We see seasonal variation, and perhaps we see business cycles on top of a slower trend.
- The seasonal variation looks like an additive effect, say an annual fluctuation with amplitude around 1 percentage point.
- Sometimes, we may prefer to look at monthly seasonally adjusted unemployment, [also provided by BLS](#).

Unemployment. Raw (black) and seasonally adjusted (red)

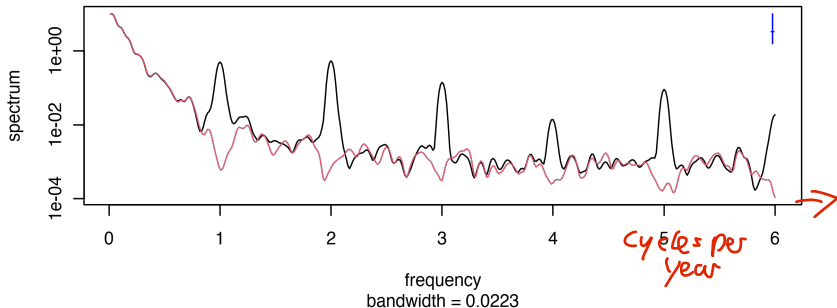


- We can wonder how the Bureau of Labor Statistics adjusts the data, and if this introduces any artifacts that a careful statistician should be aware of.

- To help understand the seasonal adjustment, we look at what it does to the smoothed periodogram.
- Using the `ts` class we can tell R the units of time.

```
u1_ts <- ts(u1, start=1948, frequency=12)
u2_ts <- ts(u2, start=1948, frequency=12)
spectrum(ts.union(u1_ts, u2_ts), spans=c(3, 5, 3),
  main="Unemployment: raw (black), seasonally adjusted (red)")
```

Unemployment: raw (black), seasonally adjusted (red)





## Comments on the smoothed periodogram

- Note: For a report, we should add units to plots. Extra details (like bandwidth in the periodogram plot) should be explained or removed.

**Question 8.2.** Why does the unadjusted spectrum have peaks at 2,3,4,5,6 cycles per year as well as 1 cycle per year?

If seasonally were perfectly sinusoidal, we would just have a peak at 1 cycle per year. Non-sinusoidal periodicity has harmonics at higher frequencies.

**Question 8.3.** Comment on what you learn from comparing these smoothed periodograms.

As we anticipate, BLS seasonal adjustment removes most of the signal at seasonal frequencies and little elsewhere.

# The frequency response function

- The ratio of the periodograms of the smoothed and unsmoothed time series is the **frequency response** of the smoother.
- The frequency response function tells us how much the smoother contracts (or inflates) the sine and cosine components at each frequency  $\omega$ .
- A frequency response may involve change in phase as well as magnitude, but here we consider only magnitude.
- Linear, time invariant transformations do not move power between frequencies, so they are characterized by their frequency response function.
- Smoothers are linear and time invariant, at least approximately. If we scale or shift the data, we expect the smoothed estimate to have the same scale or shift. We expect a smooth approximation to the sum of two time series to be approximately the sum of the two smoothed series.

## Calculating a frequency response function

- We investigate the frequency response of the smoother used by Bureau of Labor Statistics to deseasonalize the unemployment data.

```
s <- spectrum(ts.union(u1_ts,u2_ts),plot=FALSE)
```

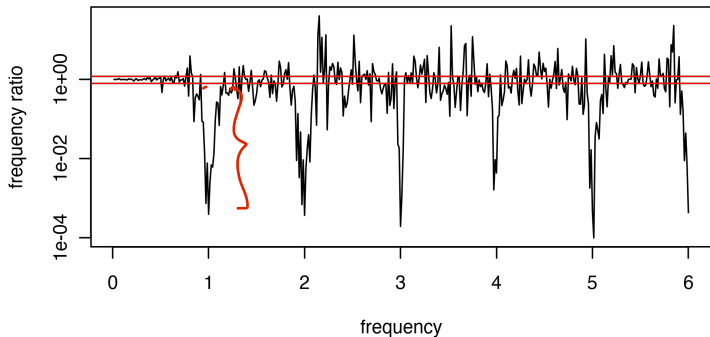
- We find the parts of `s` that we need to plot the frequency response.

```
names(s)
```

```
[1] "freq"      "spec"      "coh"      "phase"    "kernel"
[6] "df"       "bandwidth" "n.used"   "orig.n"   "series"
[11] "snames"   "method"    "taper"    "pad"      "detrnd"
[16] "demean"
```

```
plot(s$freq,s$spec[,2]/s$spec[,1],type="l",log="y",
     ylab="frequency ratio", xlab="frequency",
     main="frequency response (red lines at 0.8 and 1.2)")
abline(h=c(0.8,1.2),col="red")
```

frequency response (red lines at 0.8 and 1.2)

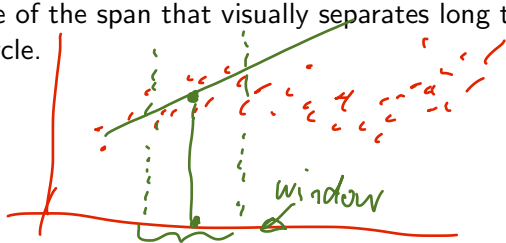


**Question 8.4.** What do you learn from this frequency response plot?

*The seasonal adjustment removes 3 orders of magnitude from the signal at seasonal frequencies. It does a good job of preserving low frequencies, but adds noise at high frequencies.*

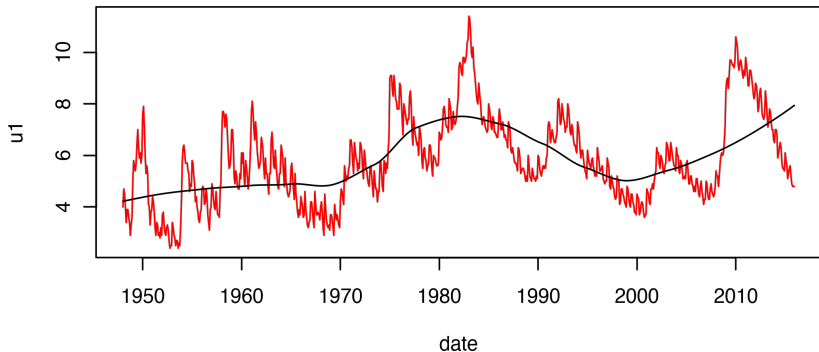
# Estimating trend by Loess smoothing

- Loess is a **Local linear regression** approach (perhaps an acronym for LOcal Estimation by Smoothing) also known as **Lowess** (perhaps LOcallyWEighted Sum of Squares).
- At each point in time, Loess computes a linear regression (a constant, linear or quadratic trend estimate) using only neighboring times.
- We can imagine a moving window of points included in the regression.
- Loess is an R implementation, with the fraction of points included in the moving window being scaled by the span argument.
- We can choose a value of the span that visually separates long term trend from business cycle.



# A Loess smooth of unemployment

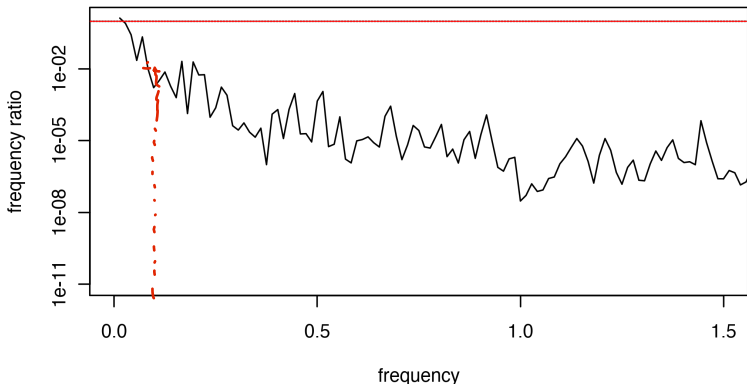
```
u1_loess <- loess(u1~date,span=0.5)
plot(date,u1,type="l",col="red")
lines(u1_loess$x,u1_loess$fitted,type="l")
```



Now, we compute the frequency response function for what we have done.

```
s2 <- spectrum(ts.union(  
  u1_ts, ts(u1_loess$fitted, start=1948, frequency=12)),  
  plot=FALSE)  
plot(s2$freq, s2$spec[,2]/s$spec[,1], type="l", log="y",  
  ylab="frequency ratio", xlab="frequency", xlim=c(0, 1.5),  
  main="frequency response (red line at 1.0)")  
abline(h=1, lty="dashed", col="red")
```

frequency response (red line at 1.0)



**Question 8.5.** Describe the frequency domain behavior of this filter.

This is a low pass filter. Power at frequencies higher than 0.1 cycles per year (10 year cycle) are reduced by 2 orders of magnitude, or more.

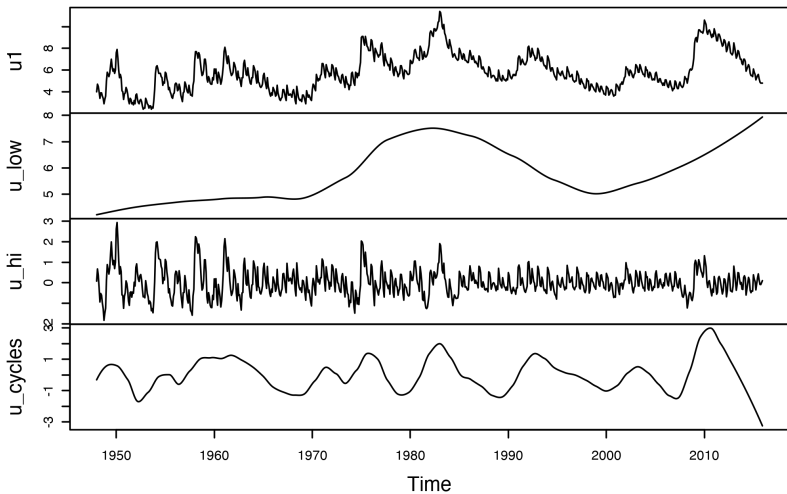


## Extracting business cycles: A band pass filter

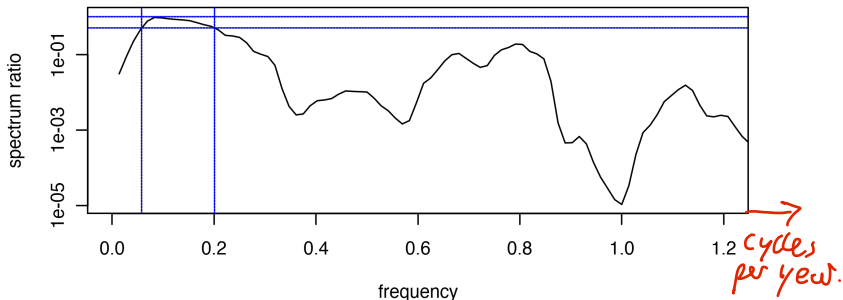
- For the unemployment data, high frequency variation might be considered “noise” and low frequency variation might be considered trend.
- A band of mid-range frequencies might be considered to correspond to the business cycle.
- We build a smoothing operation in the time domain to extract business cycles, and then look at its frequency response function.

```
u_low <- ts(loess(u1~date,span=0.5)$fitted,  
           start=1948,frequency=12)  
u_hi <- ts(u1 - loess(u1~date,span=0.1)$fitted,  
          start=1948,frequency=12)  
u_cycles <- u1 - u_hi - u_low  
plot(ts.union(u1, u_low,u_hi,u_cycles),  
     main="Decomposition of unemployment as trend + noise + cycles")
```

## Decomposition of unemployment as trend + noise + cycles



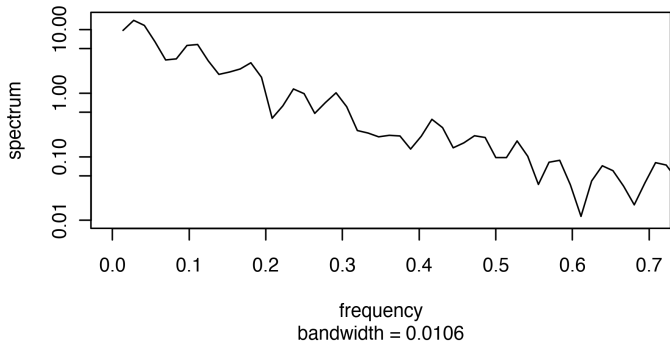
	low	hi
frequency range, region for ratio greater than 0.5	0.058	0.201



**Question 8.6.** Describe the frequencies (and corresponding periods) that this decomposition identifies as business cycles. Note: units of frequency are omitted to give you an exercise!

Here, we keep at least half the power for frequencies with cycle length between  $\frac{1}{0.201} \approx 5$  yr and  $\frac{1}{0.058} \approx 15$  yr.

Below is a smoothed periodogram for the raw unemployment data, plotted up to 0.7 cycles per year to focus on relevant frequencies.



**Question 8.7.** Comment on the evidence for and against the concept of a business cycle in the above figure.

*There are no clear peaks in the estimated spectrum. Boom & bust cycles do happen, but with unpredictable duration. There are not "resonant frequencies" associated with the economy.*

## Common smoothers in R

- Above, we have used the **local regression smoother** `loess` but there are other similar options.
- `ksmooth` is a **kernel smoother**. The default periodogram smoother in `spectrum` is also a kernel smoother. See [https://en.wikipedia.org/wiki/Kernel\\_smoother](https://en.wikipedia.org/wiki/Kernel_smoother)
- `smooth.spline` is a **spline smoother**. [https://en.wikipedia.org/wiki/Smoothing\\_spline](https://en.wikipedia.org/wiki/Smoothing_spline)
- You can learn about alternative smoothers, and try them out if you like, but `loess` is a good practical choice for many smoothing applications.

## Bandwidth for a smoother

- All these smoothers have some concept of a **bandwidth**, which is a measure of the size of the neighborhood of time points in which data affect the smoothed value at a particular time point.
- The concept of bandwidth is most obvious for kernel smoothers, but exists for other smoothers.
- We usually only interpret bandwidth up to a constant. For a particular smoothing algorithm and software implementation, you learn by experience to interpret the comparative value. Smaller bandwidth means less smoothing.
- Typically, when writing reports, it makes sense to focus on the tuning parameter for the smoother in question, which is not the bandwidth unless you are going kernel smoothing.

## Further reading

- Section 2.3 of Shumway and Stoffer (2017) discusses smoothing of time series, in the time domain.
- Section 4.2 of Shumway and Stoffer (2017) presents a frequency response function for linear filters, related to this chapter but in a different context.

## License, acknowledgments, and links

- Licensed under the [Creative Commons Attribution-NonCommercial license](#). Please share and remix non-commercially, mentioning its origin.
- The materials builds on [previous courses](#).
- Compiled on February 17, 2021 using R version 4.0.3.



[Back to course homepage](#)



## References

Shumway RH, Stoffer DS (2017). *Time Series Analysis and its Applications: With R Examples*. Springer. URL <http://www.stat.pitt.edu/stoffer/tsa4/tsa4.pdf>.